



REYANSH BUILDCON PRIVATE
LIMITED



**Reyansh Buildcon
Private Limited**

Quality you deserve and
dependability you can count on



Reyansh Buildcon Private Limited has an unique Heritage in construction that dates back to the company's founding in 1980 as M/S Jai Bhavani Construction . Later on in year 2018 as a part of M/S Jai Bhavani Construction we decided to register our firm with Registrar of Companies, Pune as Reyansh Buildcon Private Limited. We completed more than 200 Projects all over India, which includes more than 40 Projects in Mumbai, 7 in Hyderabad, 9 in Bangalore and many more in Pune, Goa,etc... We aims at quality working along with workers safety. In 2007 Reyansh Buildcon Private Limited started working in hand with Aditya Constructors and Developers, Viraj Infrastructure Pvt. Ltd

Vission: To be a world-class infrastructure construction and Real Estate Development company comitted to total customer satisfaction , by building on our strengths-innovative designs, superlative quality of materials, timely completion and demonstrating the highest standards of workmanship.

Mission:

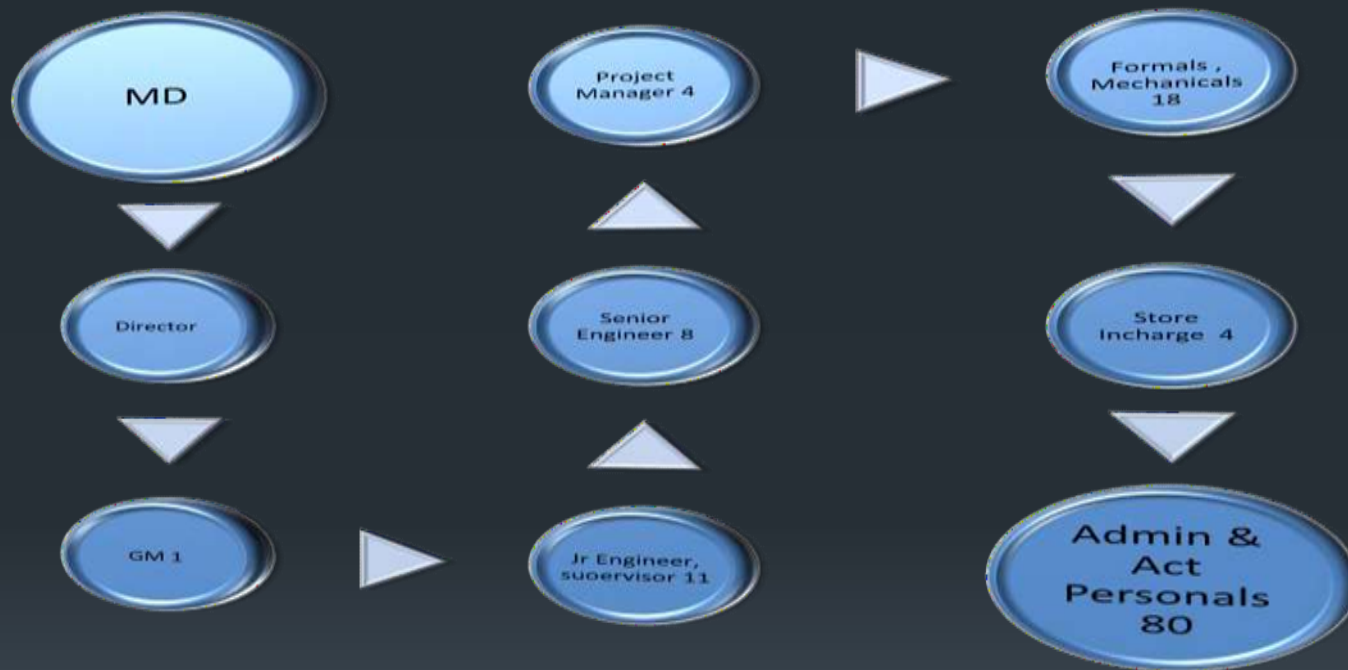
To provide a safe, healthy and friendly work environment for all the employees.

- To grow our business with honesty, integrity and the positive attitude of our team.
- To work in an systematic manner to increase our Business.
- We are committed to provide high quality projects and fulfill our customer's expectations.



Our Team Our Strength

REYANSH BUILDCON PRIVATE LIMITED



Quality Management systems

Lab Equipment's:

1. Concrete cube testing machine 4
2. Testing Equipment's 6
3. Cube Mould's 25

Other Equipment's:

- I. Shuttering Materials**
 1. Steel
 2. Wood
 3. Steel Scolding
- II. Motor and Pumpset with GI and Pipes**
- III. Motor Grider**
- IV. Mechanical Brooms / Sweepers**
- V. Megger**
- VI. Earth Tester**

Projects and Experience

REYANSH BUILDCON PRIVATE
LIMITED

- **Hyderabad**

Western Plaza (13 Lac Sqft)

S.M.R Fountain Head (5 Lac Sqft)

- **Bangalore**

18 Floors Building of Salarpuria Sattva (5.5 Lac Sqft) White Field (3 Lac Sqft)

Package 2 M.E.S (Military Engineering Service) (4.5 Lac Sqft) Brigade Orchard Park side Devanhalli

Package 3 Military Engineering service Bangalore

- **Pune**

Mantri IT Park (2.5 Lac Sqft) 1 Lakh sqft Multi store Building

Bombay Shaffrous Force (4 Lac Sqft) Hostel Building of D.Y.P University (3.5 Sqft)

- **Kolhapur**

Hirashri Lake City (4 Lac Sqft) Games Stone (2 Lac Sqft) BIMAT Institute (3.5 Lac Sqft) Big Bazar (1 Lac Sqft)

Bhima Education Society Kolhapur

- **Ratnagiri**

Nuclear Power Plant Office (2.5 Lac Sqft) Noor Heights (1 Lac Sqft)

Shanti KF Owsal Plaza Ratnagiri Godown Construction Shirol

In Hand Projects

REYANSH BUILDCON PRIVATE
LIMITED

- Airport Authority of India, CISF Accommodation at C.E Goa,
- Sattva Infrastructure India Pvt Ltd , Sattva Water Edges Residential project at Goa
- Sood Associate Pvt Ltd , MES Residential Project at Navy Goa
- Sattva Infrastructure India Pvt Ltd, Nelamangala property at Bangalore
- Maruti Richventures Pvt Ltd, Residential project at Hyderabad
- Own Hotel project at Devanhalli
- Landmark Candeur Group Bangalore 6.8 Lakh Sq.ft
- Dynamic Imperia Plus Pune 4.5 Lacks Sq.ft
- Dynamic Grandeur Pune 3.5 Lacks Sq.ft
- Atulya Homes (Claxy Group) at Pune
- Mikro Industry Shed with PEB Structure at Pune 250MT
- Godrej Green Park (B+G+23) 7.5 Lacs Sq.ft
- Columbia Asia Banglore (G+11) 2.5 Lacs Sq.ft

Our Completed Projects

REYANSH BUILDCON PRIVATE
LIMITED



Mantri IT Park in pune 2007-8



Salarpuria sattva serenity at Bangalore 2006-8



REYANSH BUILDCON PRIVATE
LIMITED



Western plaza at Hyderabad 2008-10



SMR Hights at Hyderabad 2008-10

REYANSH BUILDCON PRIVATE
LIMITED



Shri Lake City at Kolhapur 2010-12

On Going Projects

REYANSH BUILDCON PRIVATE
LIMITED



Sattva Water's Edge Goa (Sattva Infrastructure India Pvt Ltd)



Landmark Candeur Group Bangalore 6.8 Lakh Sq.ft

REYANSH BUILDCON PRIVATE
LIMITED



Dynamic Imperia Plus Pune 4.5 Lacks Sq.ft



Dynamic Grandeur Pune 3.5 Lacks Sq.ft

REYANSH BUILDCON PRIVATE
LIMITED



Atulya Homes (Claxy Group) at Pune



*Mikro Industry Shed with PEB Structure at Pune
250MT*

OUR RUNNING PROJECTS IN PUNE

GODREJ PARK GREENS, MAMURDI PUNE.

*A TUNNEL FORM PROJECT
2 No's of High rise Towers 5+23*

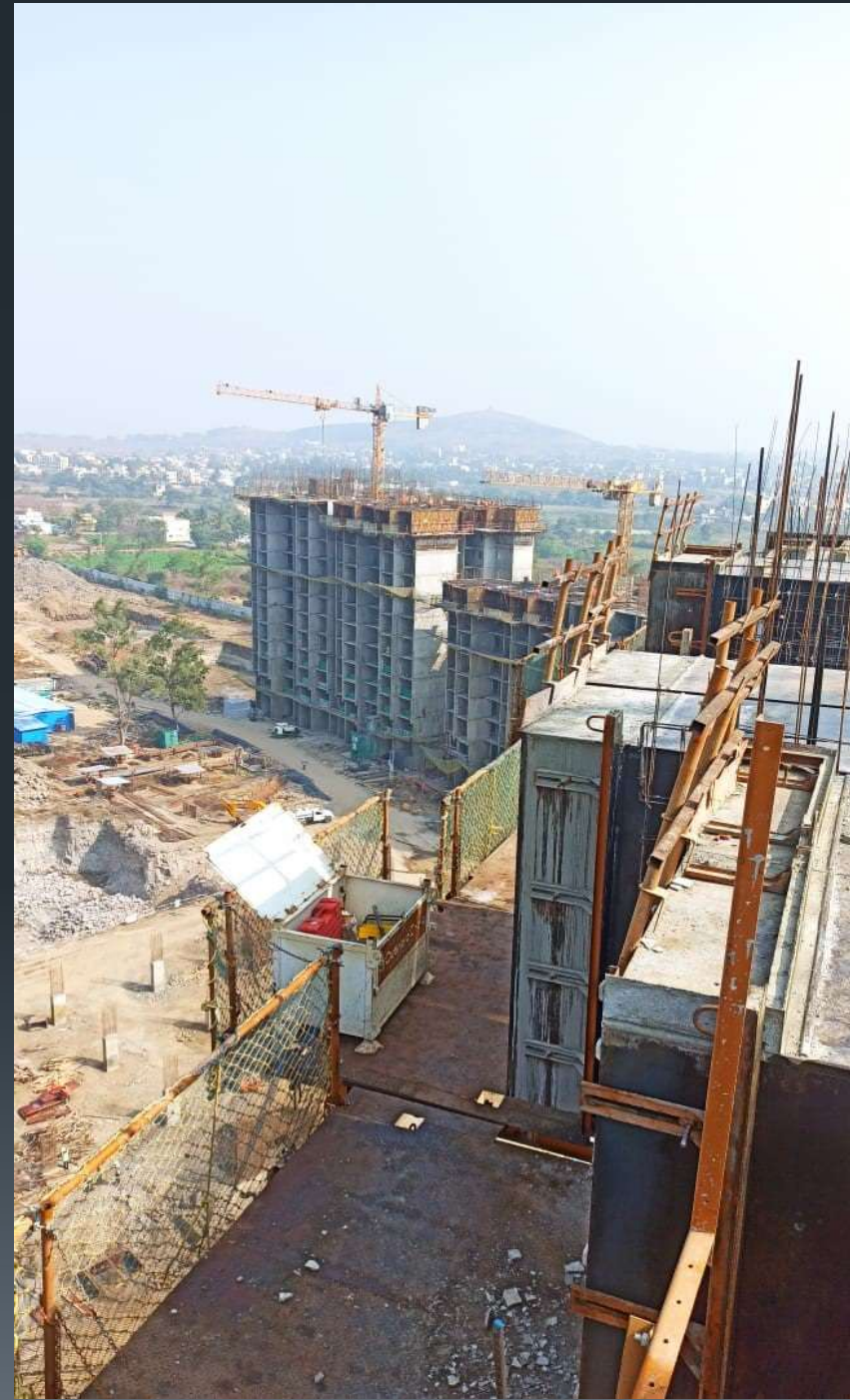


OUR RUNNING PROJECTS IN PUNE

*GODREJ
PARK
GREENS,
MAMURDI
PUNE.*

*A TUNNEL
FORM
PROJECT*

*2 No's of High
rise Towers
5+23*



OUR RUNNING PROJECT IN HYDRABAD

*RAMKY GOLDEN CIRCLE, Tukkuguda Hyderabad
(A large scale residential project in 4 acres)*



OUR RUNNING PROJECT IN HYDRABAD, RAMKY GOLDEN CIRCLE



IN JAN-21



IN MARCH-21

OUR RUNNING PROJECT IN HYDRABAD

RAMKY ONE HARMONEY, Pragati Nagar, Hyderabad.
Residential project of G+12



On Going Sites



1. worker informations (id card)



2. safety instructions (Weekly meeting)



3. Safety mockdrill at site





4. Site working



REYANSH BUILDCON PRIVATE
LIMITED



4. Site working



PF/ESI details :-	
Reg. . ESI	YES
Labour Licence .	YES
Photocopy of PAN	Enclosed
List of awards, Recognitions on previously executed projects	HELMET OF HONOUR AWARDED FOR EXCELLENCE IN ENVIRONMENT HELATH & SAFETY MANAGEMENT FROM BRIGADE GROUP

Contact Us:

REYANSH BUILDCON PRIVATE
LIMITED

Managing Director:- Mr A. S. Rathod
9823707779

Registered Office:- CS No 250 B/25, 3rd Floor, E Ward, Cinderella Castle,
Nagala Park, Kolhapur 416003.
Email:- reyanshbuildcon779@gmail.com

Branch Office:-

- D.s.complex ,2nd floor , B.B.road,old bus stop , Near international Airport Devanahalli, Bangalore- 562110
8767023702 email:- avi.adityaconstruction@gmail.com
- Ground Floor,, 18/196, Suryanagar Colony, Behind MES College, Zaurinagar, Sancoale, Goa, South Goa, Goa, 403710

We Works at: Pune, Kolhapur, Mumbai , Bangalore, Hyderabad, Hubli, Aurangabad, Solapur, Ratnagiri, Goa.

REYANSH BUILDCON PRIVATE
LIMITED



THANKING YOU